

NT Business Count 2021-22

Business growth was remarkably strong in FY22...

The number of businesses operating in the Territory grew by 5.7 per cent in the 2022 financial year, the strongest growth in business numbers since the ABS began publishing the business count release (Table 1). Nationally, growth in the number of businesses was even stronger, at 7 per cent. Growth was particularly strong among non-employing businesses, which increased by almost 10 per cent (Graph 1).¹

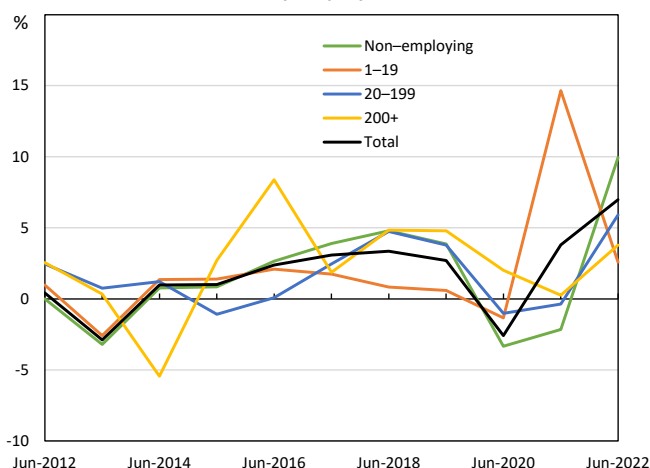
Territory businesses represent just 0.6% of all Australian businesses, and of the jurisdictions, the Territory has the lowest number of businesses per capita. There are 63 businesses per 1000 people in the Territory, below the national average of 100 businesses per 1000 people (Graph 2).

Table 1: Business Counts

	Jun-22	Jun-21	Change (no.)	Change (%)	Entries	Entry rate (%)	Exits	Exit rate (%)
NT	15,796	14,947	849	5.7	2,829	18.9	1,918	12.8
Australia	2,569,900	2,402,254	167,646	7.0	472,731	19.7	305,085	12.7

Graph 1

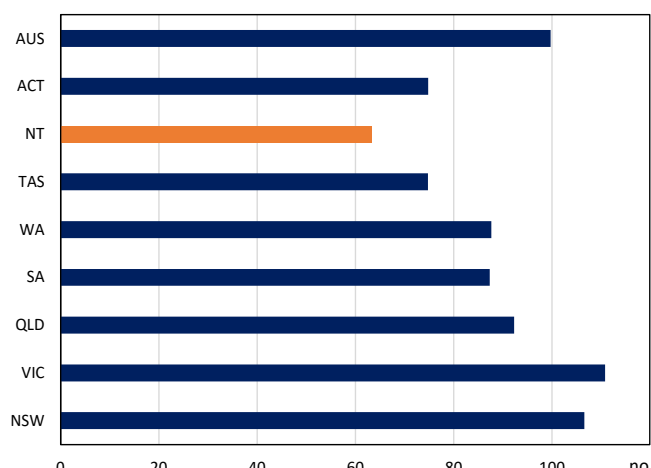
Australian Business Growth Rate Annual; by employment size



Source: ABS

Graph 2

Businesses per 1000 People 2021-22



Source: ABS

...as a result of record numbers of business entries

Both nationally and in the Territory, the increase in business numbers was driven by record business entry rates. Business exit rates remained at similar levels to the past five years (Graph 3). Quarterly data show that business entries in the Territory were reasonably consistent throughout the year.

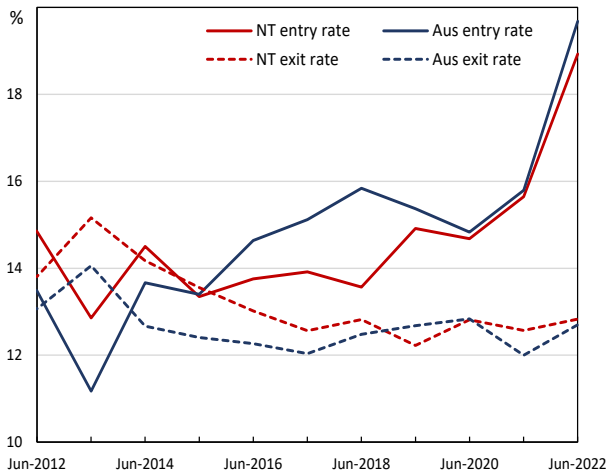
By industry the biggest contributors to growth in business entries nationally were the construction and transport industries (Graph 4). Growth in the construction industry reflects the significant fiscal support directed to that

¹ Detailed data on Territory businesses (by industry, turnover, number of employees, and location) will be released in December.

industry through initiatives such as Homebuilder, and the associated increase in construction activity. The removal of most COVID-19 restrictions by December 2021 supported an increase in demand for transportation and delivery drivers, many of whom are required to have ABNs as gig economy workers.

Graph 3

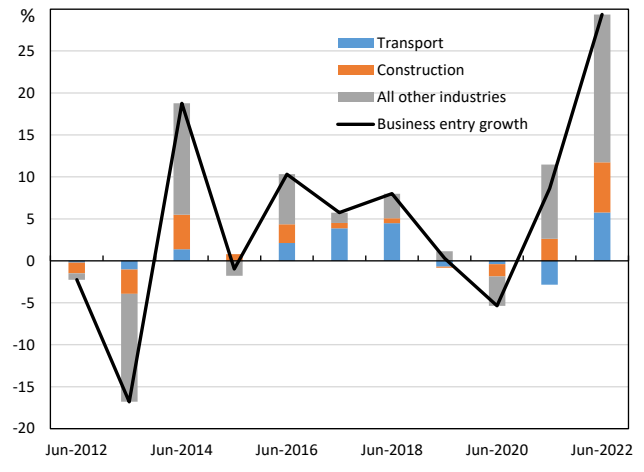
Business Entry and Exit Rates Annual



Source: ABS

Graph 4

Australia Business Entries Growth Annual, with contributions



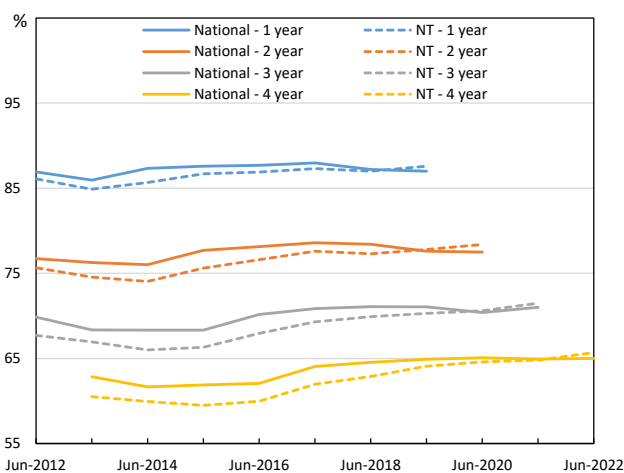
Source: ABS

Survival rates in the Territory increased slightly

Survival rates of Territory businesses increased in 2021-22, and now slightly exceed national averages. Of all the Territory businesses operating in June 2018, 87.6% survived to June 2019, 78.4% survived to June 2020, 71.5% survived until June 2021, and 65.7% survived until June 2022. (Graph 5). However, survival rates of new entries remain below national averages (Graph 6). The gap between the survival rates of existing and new businesses in the Territory has increased in recent years.

Graph 5

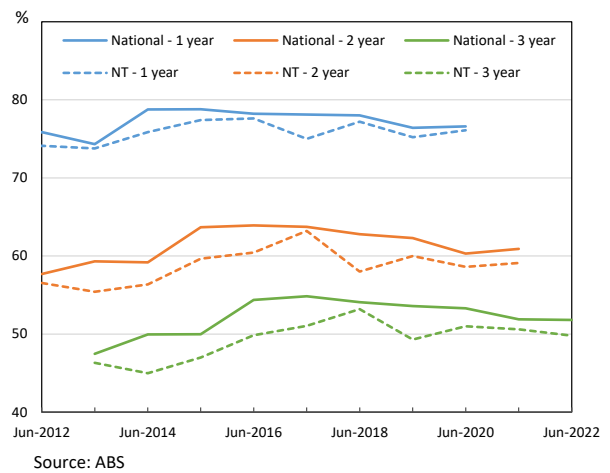
Business Survival Rates



Source: ABS

Graph 6

Business Survival Rates of New Entries



Source: ABS